

# CONCRA WOOD GOLF CLUB

MEMBERS AND SHAREHOLDERS NEWSLETTER UPDATE

## WHAT'S BEEN HAPPENING AT CONCRA WOOD

Dear Member,

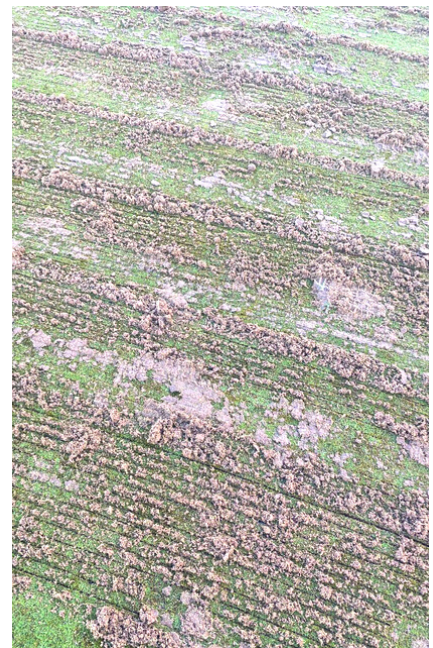
We hope you are keeping safe and healthy and looking forward to another enjoyable year ahead in Concra Wood. We are all too aware of the current restrictions under level 5 and eagerly await the announcement of the safe resumption of Golf.

As many of you may be aware, the team at Concra Wood continued to work throughout the current lockdown, a large number of projects to enhance the playability and conditioning of the course have taken place or indeed are still ongoing.

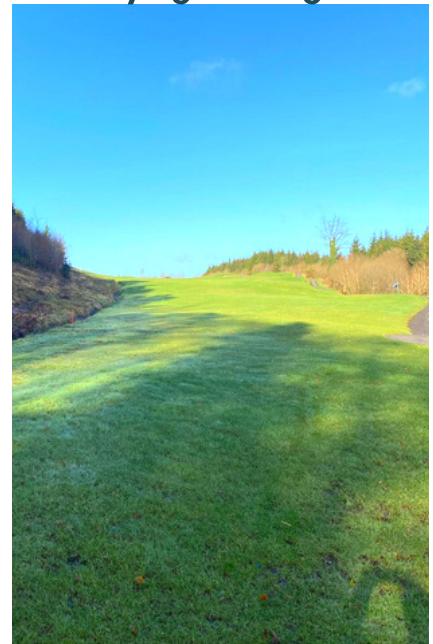
With the first growth of spring all the fairways have received a first cut but as yet the defining cuts to determine fairways widths and shape have still to take place. All tee box's have received an initial nutrient feed, they have been treated for moss, first cuts have taken place.

A significant programme of works has begun on the greens as follows; Two nutrient feeds and a number of cuts. Vertis cutting has taken place, unlike regular greens mowing where the blades are horizontal to the putting surface, verticut blades are vertical to the greens. ... The blades then break up the stolons of the plant, allowing the plant to produce more leaves for a denser turf. Older, dying leaf material is pulled up, giving room for new leaves.

Scarifying the greens to a depth of 20mm, removing dead plant and animal material known as thatch, which causes water retention spongy greens and inconsistencies.



**Scarifying of the greens**



**18th tee box view**

.....

Deep hollow tining . A hollow tine is a round tube that penetrates into the ground, collects a core and when the tube penetrates the ground again, the core is pushed out through a hole. This allows greenkeepers to remove material, such as poor quality soil and thatch and allows water and air into the root zone.

The final process will include a heavy sanding follows by over-seeding of bent grass. This will ensure our greens are in tip-top condition ready for the return of our members. On the third hole, the pond on the right of the green has had rushes trimmed back, a number of small sally trees cut back, and this opens the full view to the green reminding the golfer of the dangers on approach to the green.

Along the fifth all drains leading to the shoreline have been identified and flushed, sally tress have been cut back on the right had side of the green and a small number of drains have been repaired.

An extensive land drain is been installed to the right hand side of the green and new levels installed. Overgrowth removed between the higher tee box and the buggy path. A number of rhododendron plants have been relocated from the 5th right rough to the extreme right of the 6th green. New drainage installed in a few areas and existing drains flushed.

Between the eighth and ninth hole significant removal of undergrowth has taken place and a number of more establish trees remain, we hope to enhance this area will selective planting of new trees.

The land drain on the right of 11th fairway has been deepened and re-drained toward the internal pond on the 13th, A new drain has been established on the upper right side past the bunkers.



**Right hand side of 5th green**



**New drainage on the 17th fairway**



**View from the 8th fairway**

.....

A large land drain opened between the 11th green and the driving range.

Left of the tee box's on 13th has had undergrowth removed, new drainage installed on the 13th fairway and all existing drains flushed and repaired. The water level of the internal pond has been reduced lowering the water table on the 13th .

A number of dead trees along the fairway of the 14th have been removed, bringing the lake into view from the tee box.

On the 16th and 17th holes, a major drainage programme has taken place, some new drains developed and existing drains repaired and flushed. On the 18th undergrowth along the left hand side from tee box to green has been cut back.

As you can all appreciate all these works have been completed by a very small number of staff and with the help of a few volunteers, as we approached the re-opening of Concra Wood we will be appealing for members to help out where possible under the guidance of the Greens Committee.

We are sure the big question is "how Concra is surviving financially through this difficult time?"

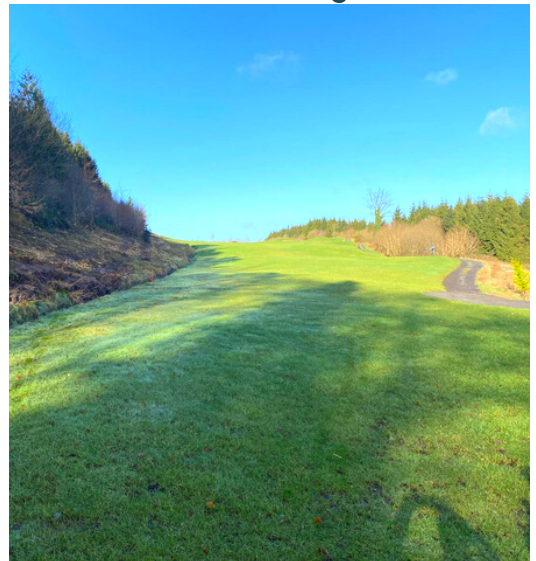
Concra like most businesses have received supports from the government in relation to the wage subsidy scheme, 2020 saw a significant increase in our members and cost cutting measures last May have all helped maintain financial stability. To date approx. 25% of our membership have been paid for 2021. We have all heard whisperings of reduced fees in 2021 but realistically this is not possibly.



**New drainage on the 17th fairway**



**Overview drone footage of Concra**



**The view from the 18th tee box**

.....

We continue to meet our obligations on our mortgage, grass continues to grow and as outlined earlier, improvements to the course are on-going.

We therefore urge all members to understand how vitally important our membership income is in this year, who know when we will open to green fees.

The office is Open to receive payments on a Monday and Wednesday from 9am to 1pm.

Conor McKenna has decided to move to pastures new, we wish Conor the very best of luck in his new venture. Conor will always been an integral part of the Concra story and we sincerely thank him for his years of service.

Our final bit of good news for all our members that we have the pleasure to announce that Ciaran Lavery has been appointed to the position of Golf Professional at Concra Wood.

Ciaran has been a valued assest as an Assistant Professional to Conor for many years now. Having qualified a few years ago as a PGA Golf Professional, Concra Wood will be his first role in this title. We are delighted to bring a bit of continuity to Concra Wood and we know that Ciaran will bring this to the club.

Ciaran is looking forward with enthusiasm to his new role and we wish every success and good fortune to him.

We hope all our members will support Ciaran well on his new venture with Concra Wood.

We are looking forard to welcoming you all back to the fairways of Concra Wood very soon.



**Looking back at the 11th tee box**



**Overview drone footage of Concra**



**Our new PGA Golf Professional  
Ciaran Lavery**

.....